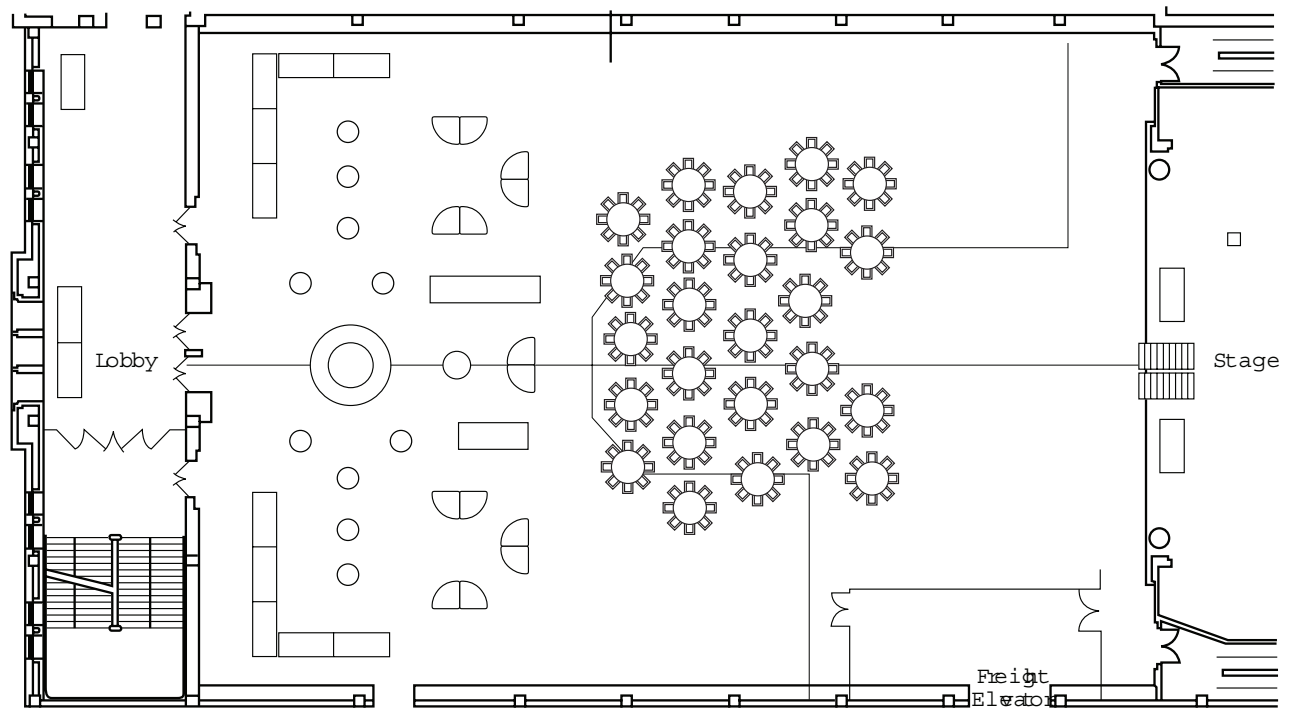


MEETING SPACE SPECIFICATIONS

MURAT CENTRE

502 N. New Jersey St.
Indianapolis, IN 46204
Phone: 317-231-0000

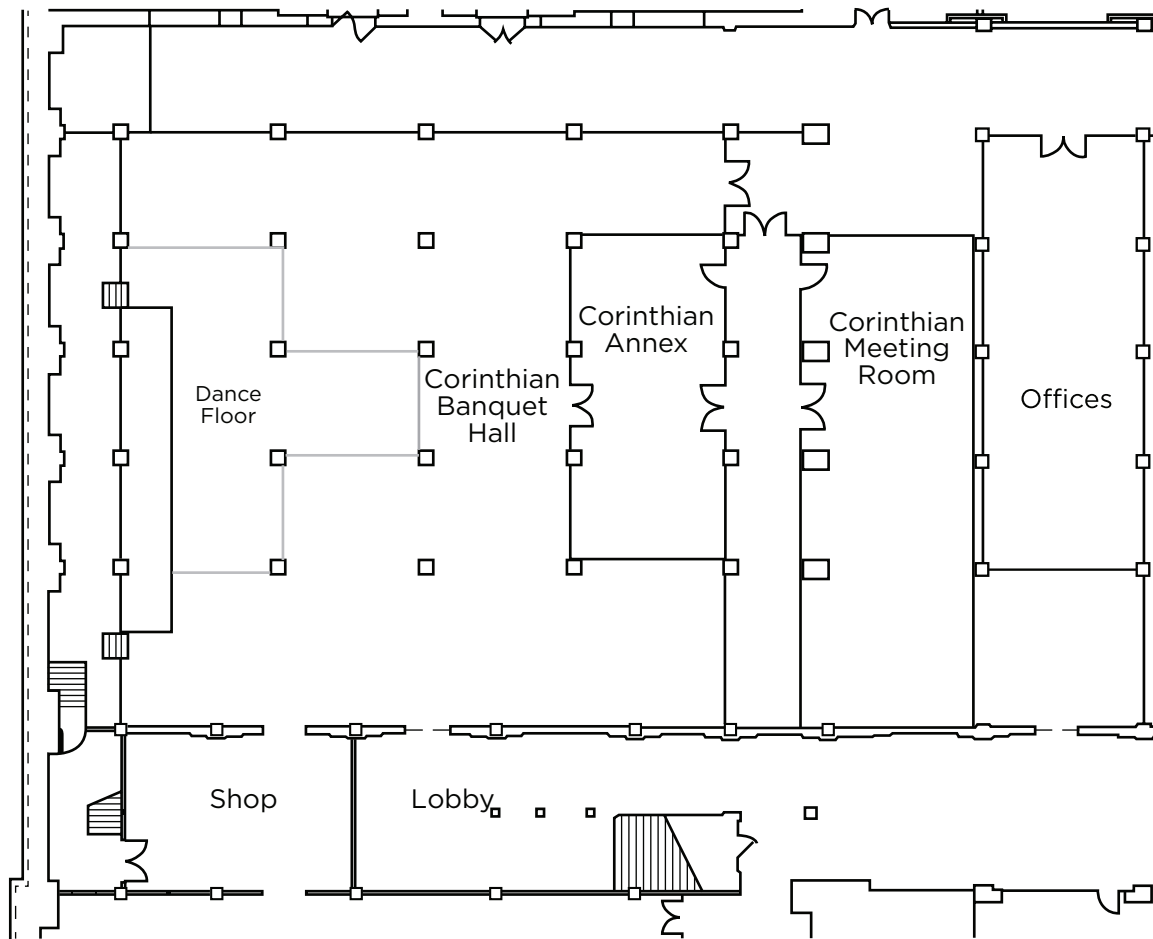
Note: enclosed floor plans do not include all meeting space available at the Murat Centre, including the Murat Theatre.



Egyptian Room
with dinner and casino setups

MEETING SPACE SPECIFICATIONS

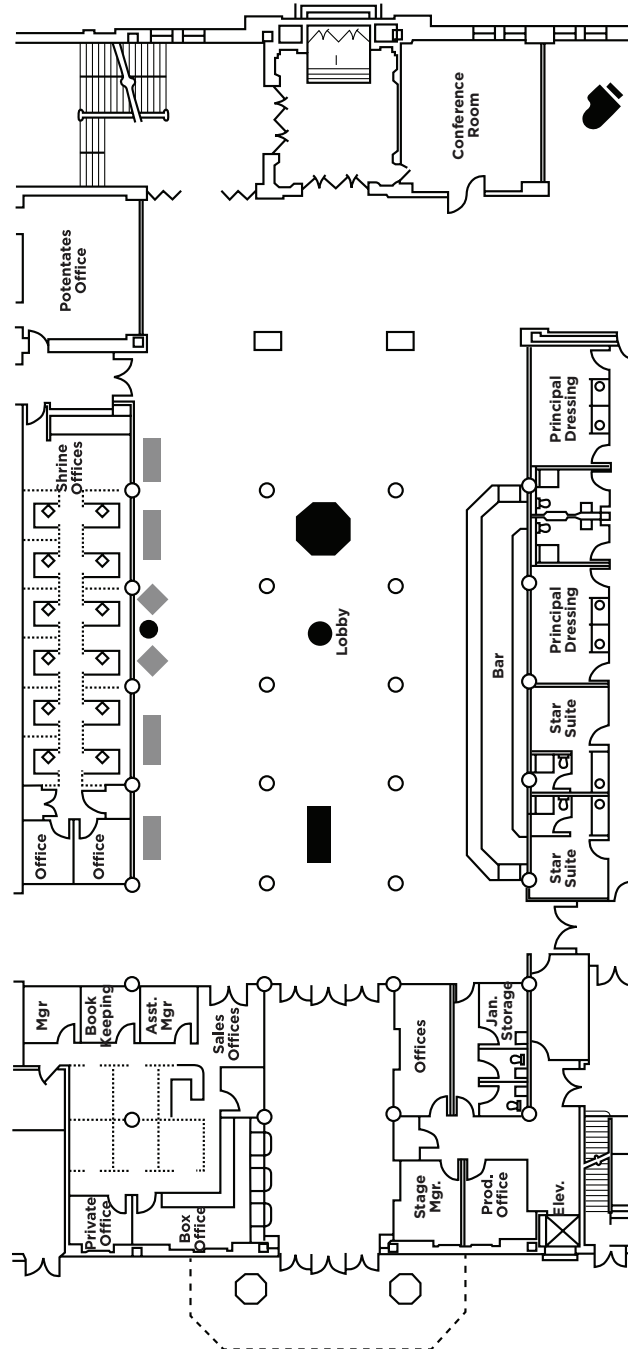
MURAT CENTRE (continued)



Corinthian Hall

MEETING SPACE SPECIFICATIONS

MURAT CENTRE (continued)



The Grand Lobby

MEETING SPACE SPECIFICATIONS

MURAT CENTRE *(continued)*

Description

The Murat Centre is a multi-purpose facility featuring a 2,500-seat performing arts theater, an 1,800-seat concert hall and banquet room and 600-seat multi-function room among other flexible meeting spaces, including the dramatic and luxurious Grand Lobby.

Meeting Room Specs:

Murat Theatre (capacity of 2,476-2,636):

The completely restored theatre is a resplendent venue for your special event requiring a stage grand enough to accommodate Broadway shows, yet comfortable for more personal performances.

The Grand Lobby:

Restored to its original glory, The Grand Lobby provides a luxurious and relaxed setting for private parties or receptions. Most commonly used as the gathering area before a Murat Theatre event!

The Egyptian Room (103' x 140'):

With its high ceilings and intricate, hand carved murals, The Egyptian Room offers a unique atmosphere for parties, conferences, trade shows and receptions of up to 2000 people! At 45ft. wide, the stage makes the Egyptian Room an ideal venue for entertainment and special events involving presentations!

The Corinthian Hall (85' x 82'):

Corinthian Hall is a beautiful mid-sized room! Because of its size and Victorian Elegance, Corinthian Hall can be used creatively for almost any type of event, but especially popular for wedding receptions and holiday parties of up to 300 guests!

The Great Hall:

An open area ideal for pre-show receptions or as an added feature, it is most commonly used as the perfect setting for your wedding for up to 250 guests.

The Crowne Room:

A private room for more intimate gatherings of up to 75 guests, complete with private restroom and bar!

The Corinthian Annex (47' x 21') and The Corinthian Meeting Room (70' x 22'):

Newly renovated spaces ideal for use with the Corinthian Hall, or used separately as private pre-show reception sites, meeting areas or breakout spaces during larger functions. Both rooms include a pull down screen for presentation.

2nd and 3rd Floor Lobbies:

Either lobby is ideal for a pre-show reception, or day time meeting space if you are looking for something a little different! Each space highlights the unique stained glass only found in the Murat Centre.